

# DESCHUTES COUNTY GIS

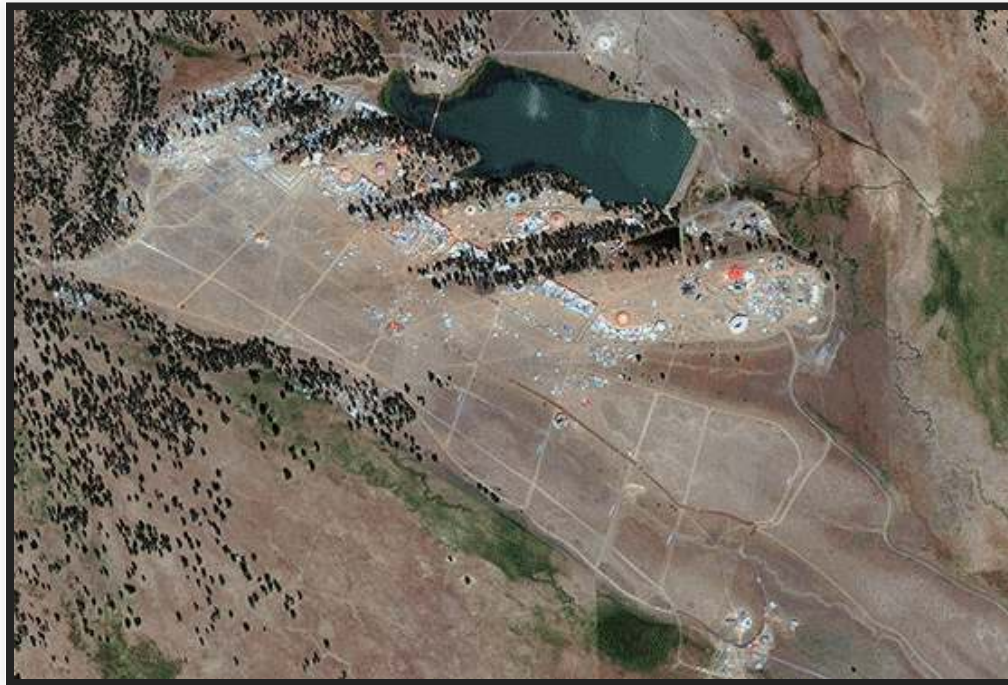
[DESCHUTES.ORG/SOCIALMEDIA](https://deschutes.org/socialmedia)

Shad Campbell

@shadcampbell

special thanks to: Melinda, Geri, Evan, Rachel, and John

# #ApocEclipse



+250,000

# #ApocEclipse



## MULTI-AGENCY COORDINATION CENTER

### AKA THE "MACC"

- Firefighting, law enforcement, public works, public health, NGO's, private sector, and information technology.
- Crook, Deschutes, Jefferson Counties (Wheeler, Gilliam, Grant, Baker, and Harney)
- St. Charles HS, BNSF, TacSat, Project Wildfire
- ODOT, ODF, OSP, OEM, OHA, 211
- FEMA, Red Cross, BLM, USFS, DHS, FBI, NWS

# INSIDE THE MACC



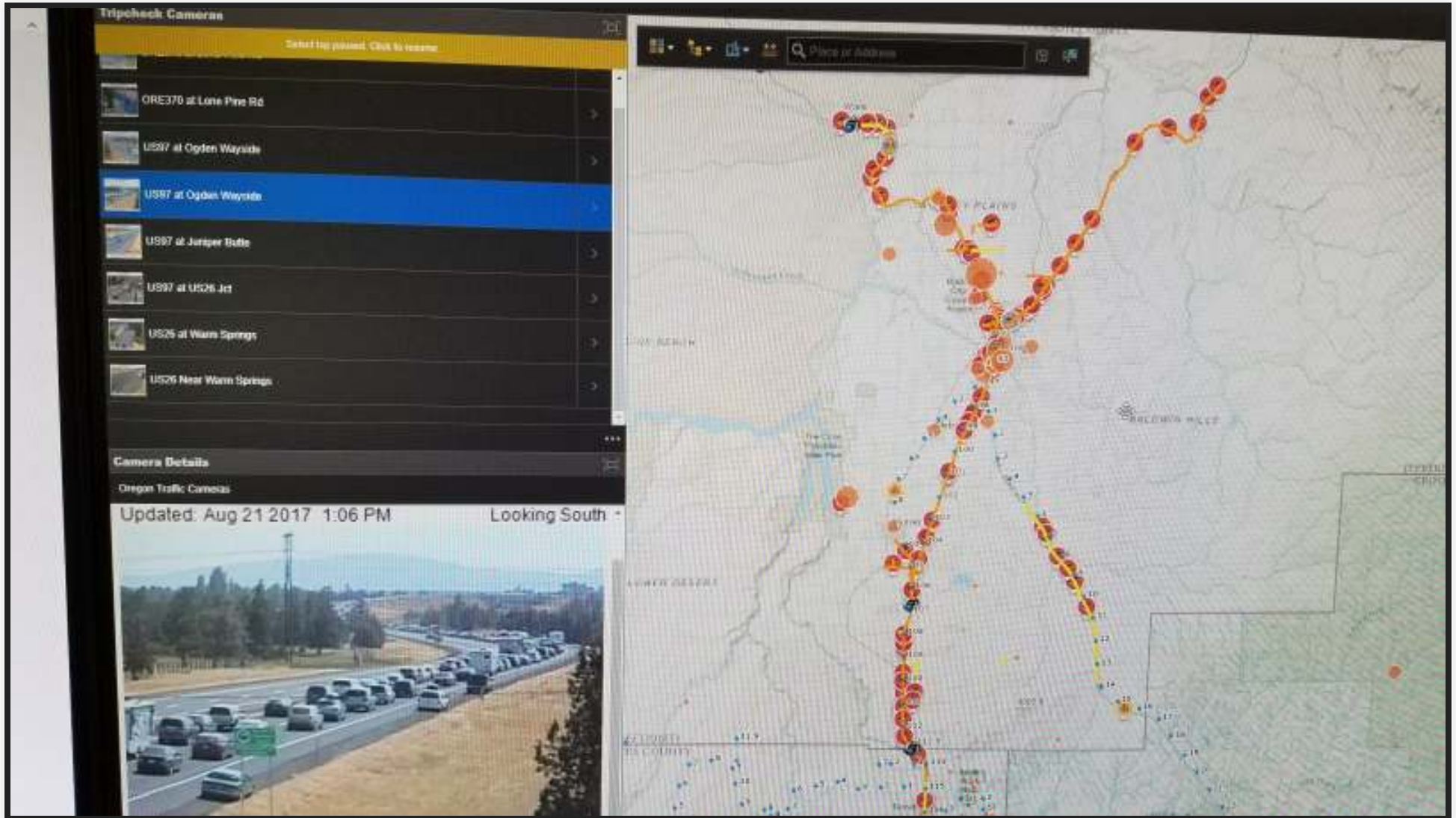
# **MACC ORGANIZATION CHART**

# CONCERNS

- Traffic - ability to deliver emergency services
- Fires - natural or human caused
- Health outbreaks
- Communications - cell capacity
- Shortages - gas/food/water
- Hospitals - capacity/services
- Shelters - capacity
- Weather



# BUMPER TO BUMPER





# RESOURCES

- Blackhawk helicopter - National Guard
- Airlink/LifeFlight - each additional bird
- ODOT additional signage
- Cell providers - additional COWS
- Ambulances - contractors
- Urgent Care facilities - additional hours

# DATA RESOURCES

- Live traffic information
  - [HERE](#)/Esri
  - Waze - [Connected Citizens Program](#) partner
- Heliports
- Water draft sites
- Gathering places
- Gas stations - card lock
- Weather - Accuweather and ENTLN

# GIS ROLE

1. Paper

2. Digital

- IT - multiple networks - data sharing
- ArcGIS Server
- ArcGIS Online
- Operations Dashboard
- Web AppBuilder

**DEMO**

ArcGIS Online

**THANK YOU**