

Racial Equity & Social Justice: A Geographic Approach

John Ruffing



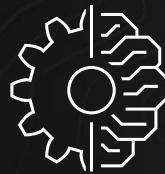


Spatial and Equity Lenses

WHY THEY MATTER



THE ROLE OF DATA



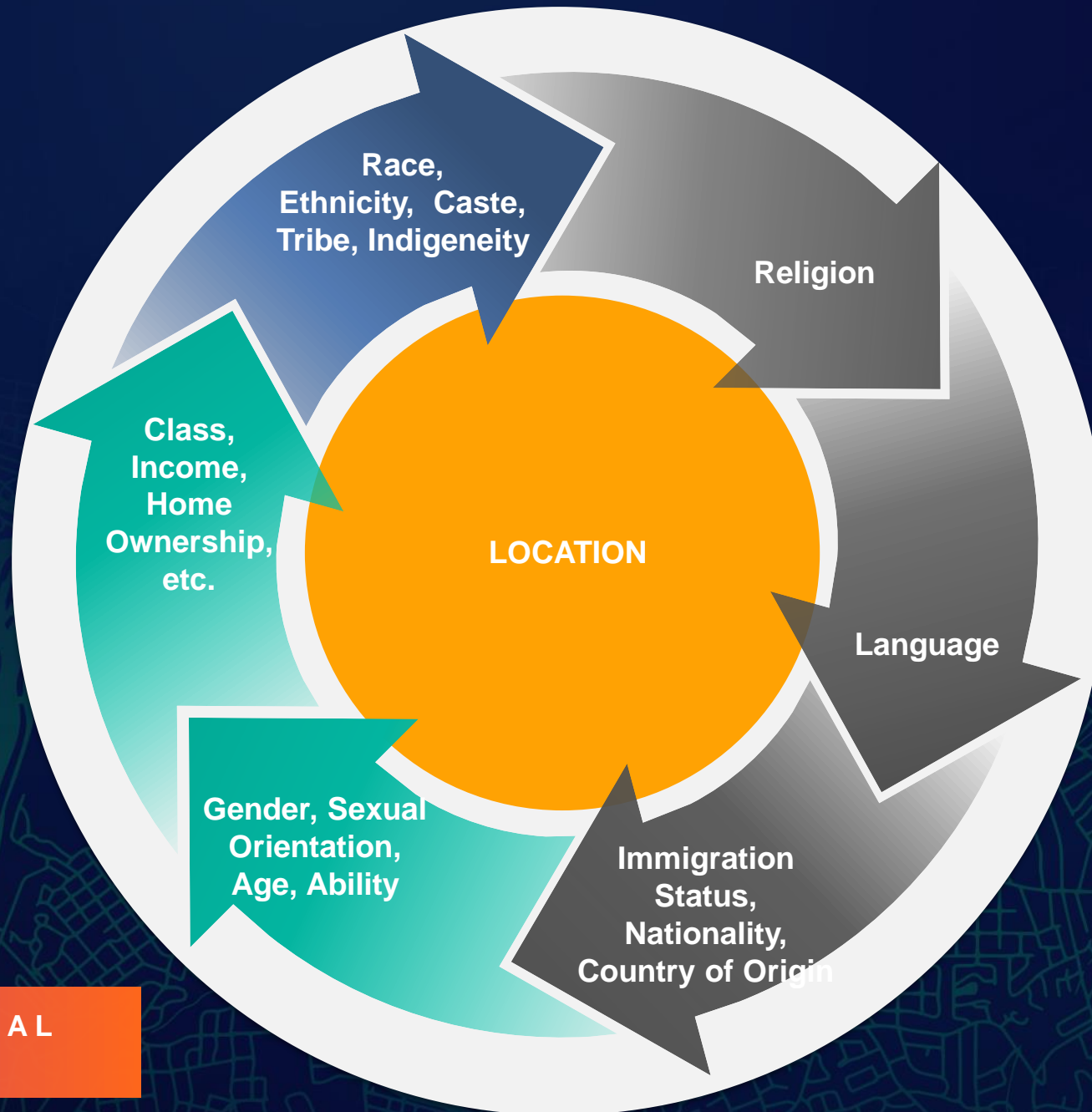
APPLY THE LENSES



A Geographic Approach

GIS for Racial Equity &
Social Justice





**APPLY INTERSECTIONAL
EQUITY LENSES**

Operationalize
Positive Practices



Engage
Communities



Map and Analyze
Equity



Manage
Performance

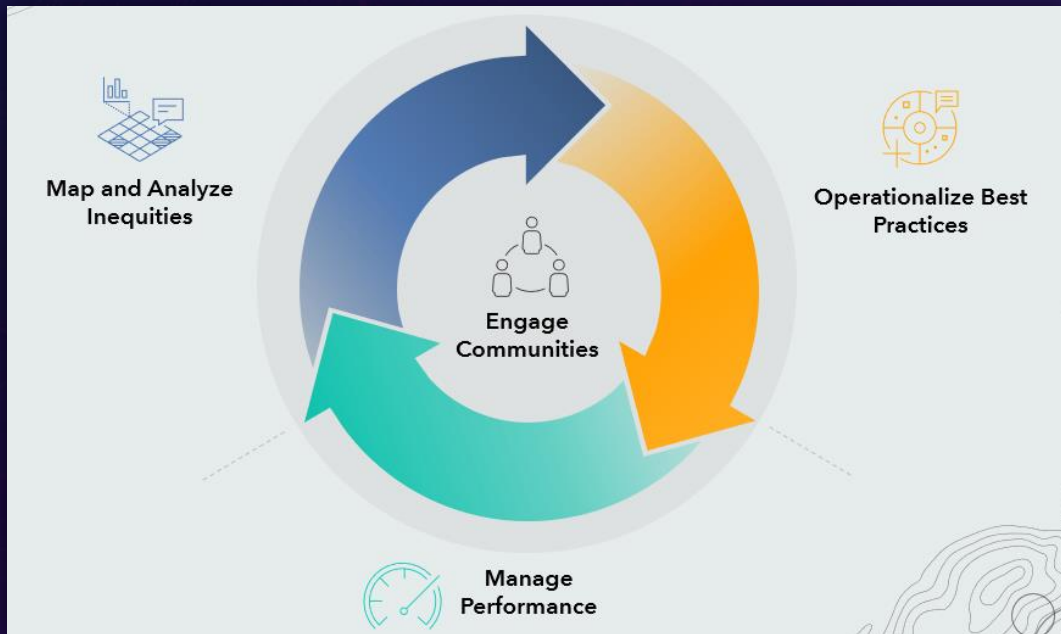


RACIAL EQUITY & SOCIAL
JUSTICE WORKFLOW

Understand & Plan

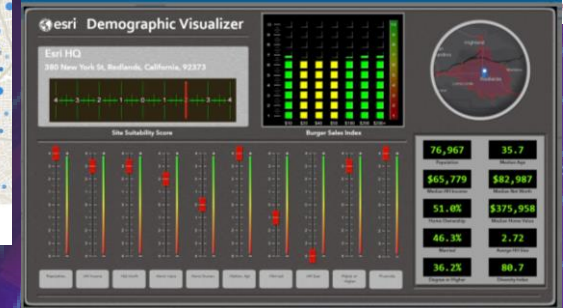
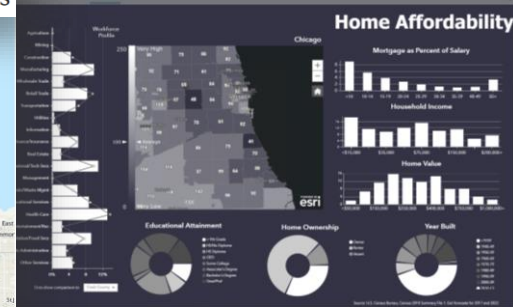
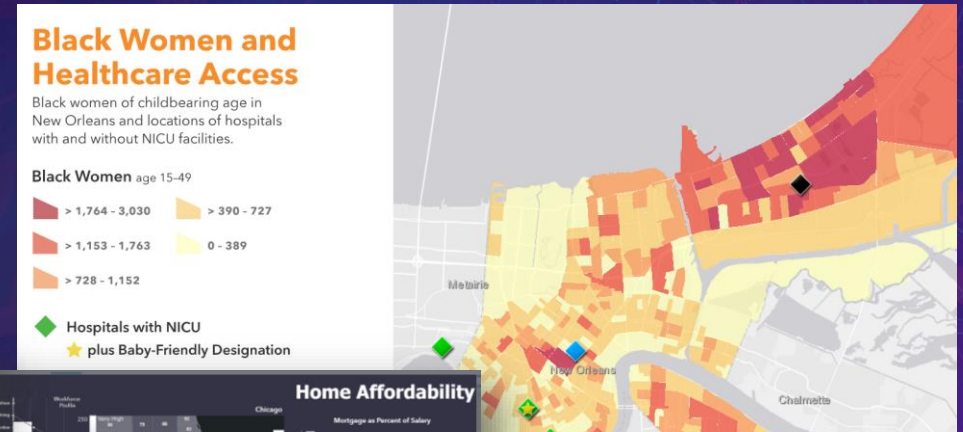
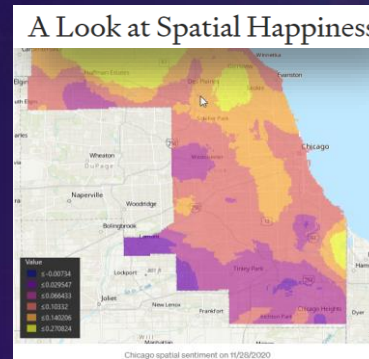
Take Action & Measure Impact

Engage Stakeholders



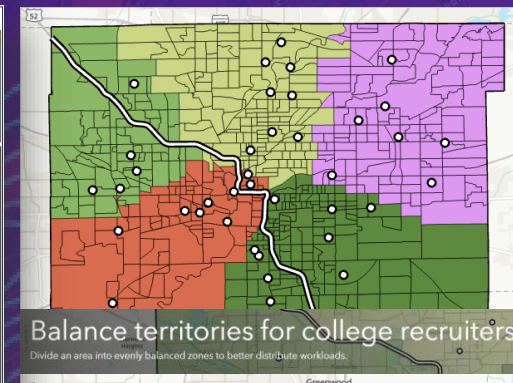
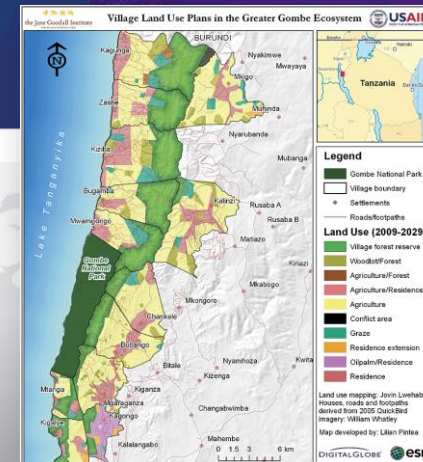
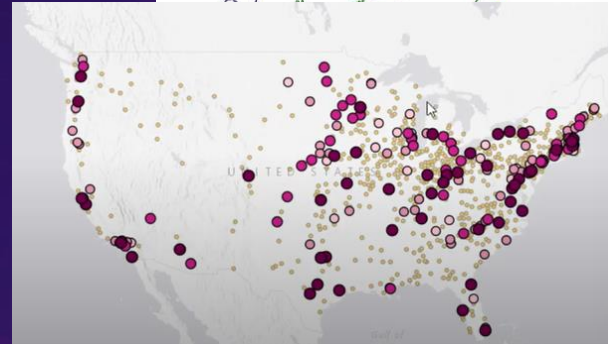
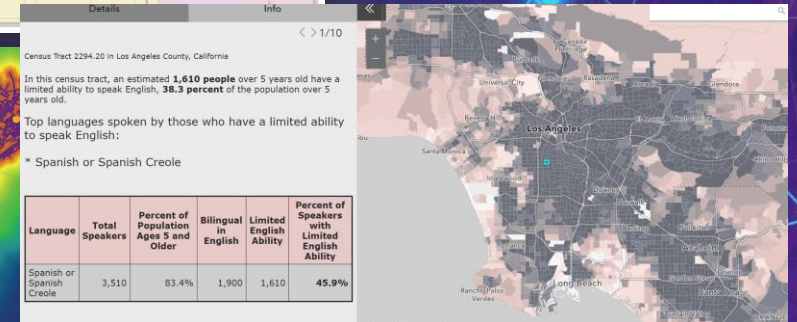
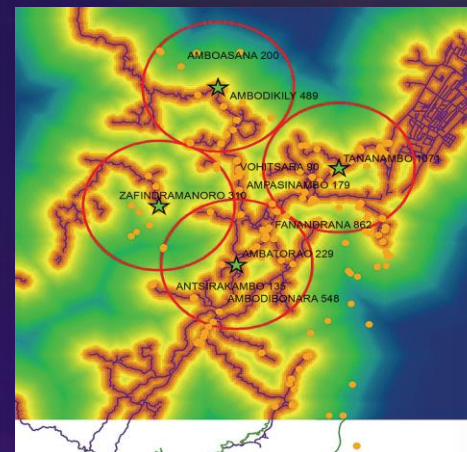
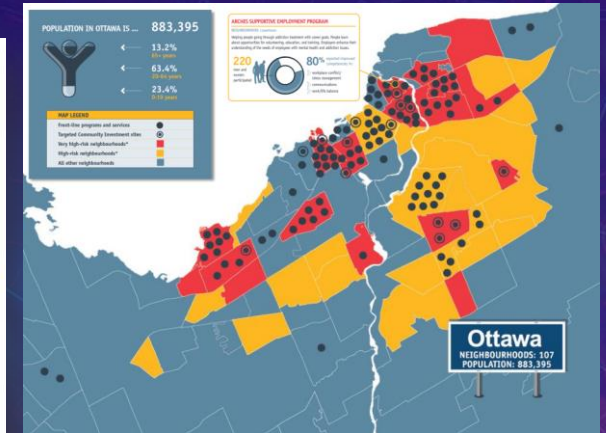
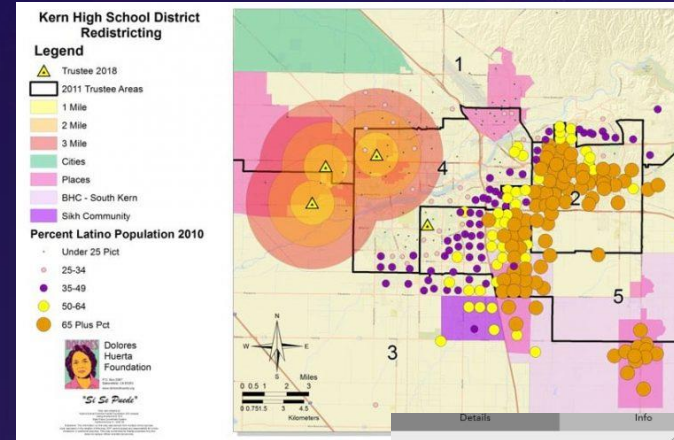
Understanding as a First Step...

- *Where does our workforce not represent the local community?*
- *Who are we missing? Where are they? How can we reach them?*
- *Where do inequities in outcomes or access to resources exist in the areas we serve?*



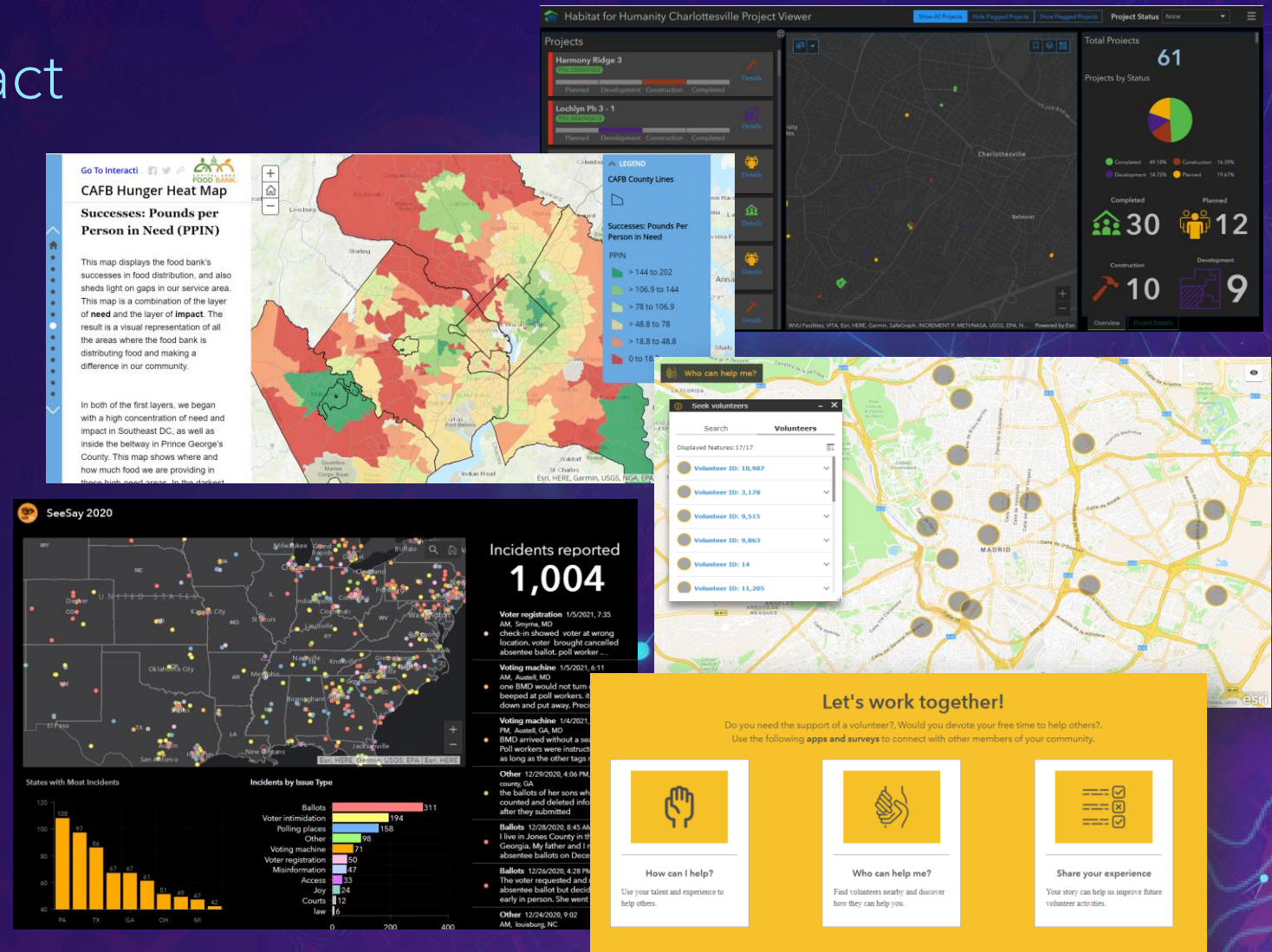
Planning...

- *Where should we allocate our resources to best address workforce or community inequities?*
- *How should we perform outreach?*
- *Where can we support community partners?*
- *How can we make these efforts most effective? Equitable?*



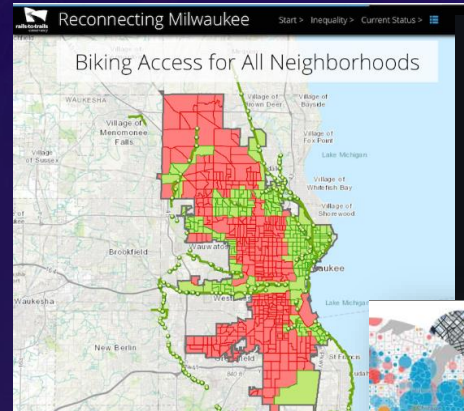
Take Action & Measure Impact

- *What's happening where?*
- *What's the overall status?*
- *Where have we made progress?*
- *How can we do better?*



Engage Stakeholders

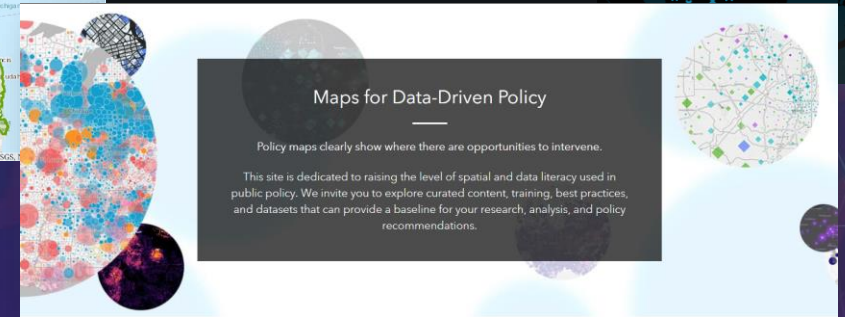
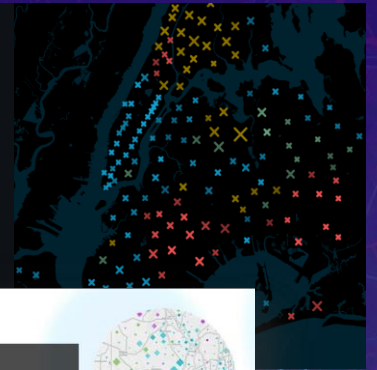
- *How can we use data to advocate for our initiatives?*
- *...Report on our impact?*
- *...Affect policy change?*
- *...Increase community engagement?*



Segregation is Killing Us...

Contrary to popular belief, COVID-19 is no great equalizer. In our analysis, we found segregation itself is a public health crisis NYC.

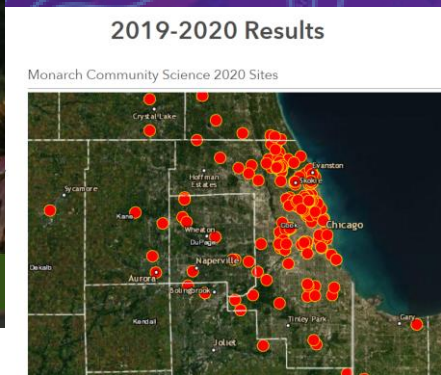
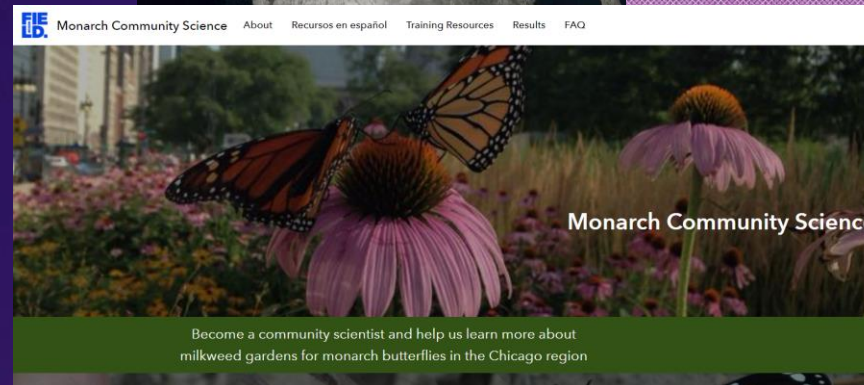
Territorial Empathy | January 18, 2021



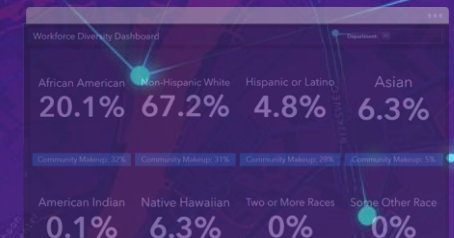
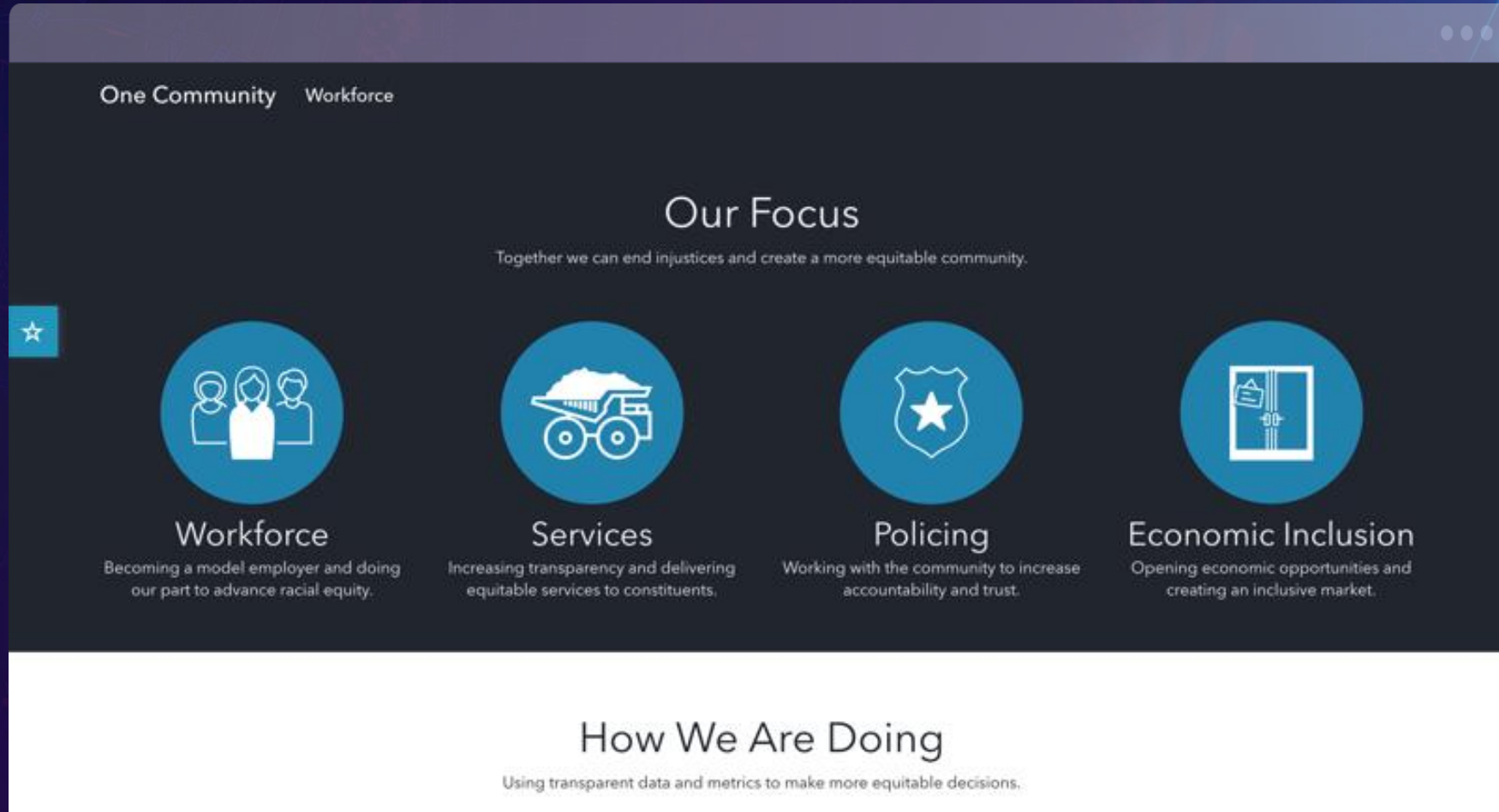
Race and Equity Census 2020 Data Hub

Census 2020 Data Hub

Advancement Project - Asian & Pacific Islander American Health Forum - Demos - Faith in Action - NAACP - National Congress of American Indians - National Urban League - Race Forward - Unidos



Focus on Key Issues



Getting Started

Resources to Leverage
Today





Data & ArcGIS Solutions

**Living
Atlas of
the World**



**Racial Equity
& Social
Justice Hub**

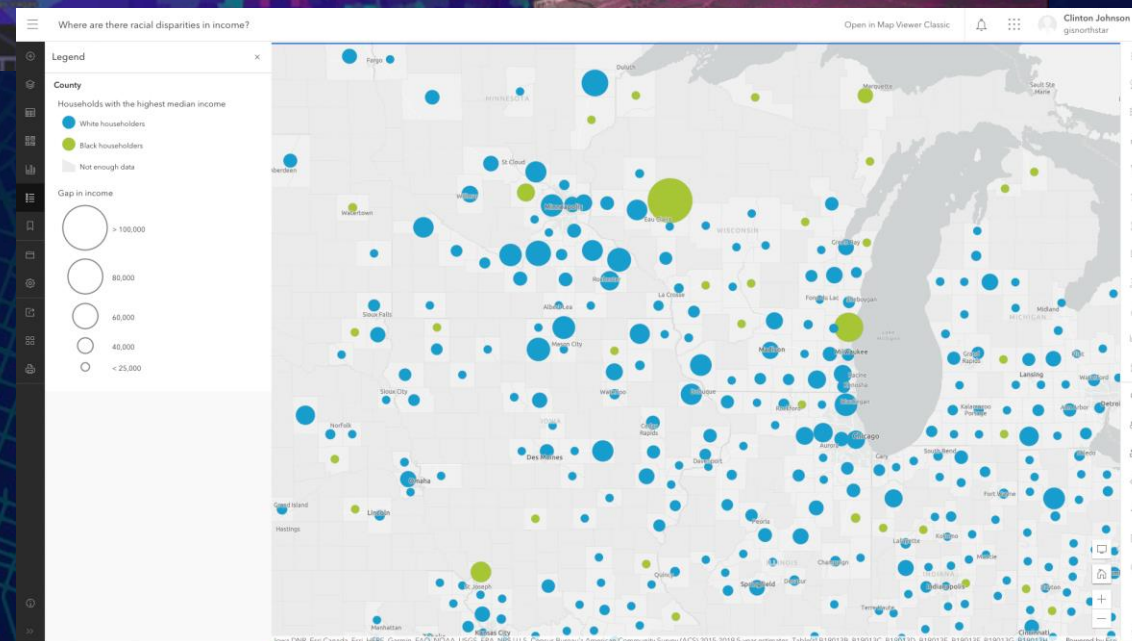
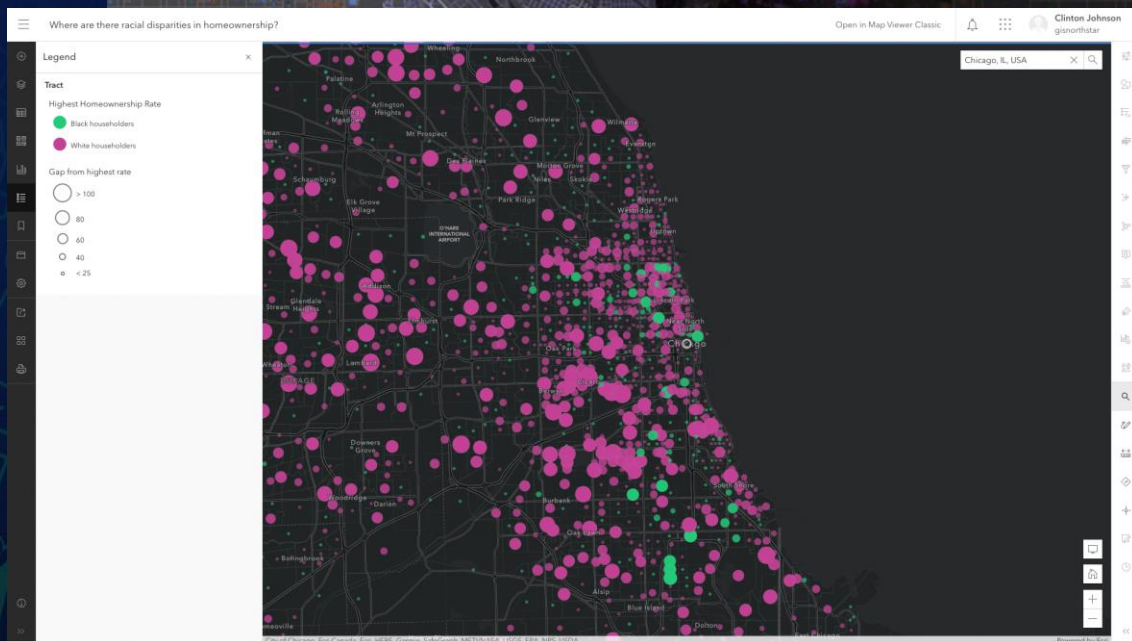


**ArcGIS Solutions
for Racial Equity
& Social Justice**



ArcGIS Living Atlas of the World is the foremost collection of geographic information from around the globe. It includes maps, apps, and data layers to support your work.

Search Living Atlas for maps, apps, and more



Racial Equity GIS Hub

Check back often for new resources and content

Esri's Racial Equity GIS Hub is an ongoing, continuously expanding resource hub to assist organizations working to address racial inequities. The Racial Equity GIS Hub includes data layers, maps, applications, training resources, articles on best practices, solutions, and examples of how Esri users from around the world are leveraging GIS to address racial inequities.

Get started

Get data

Get help




Racial Equity & Social
Justice Hub



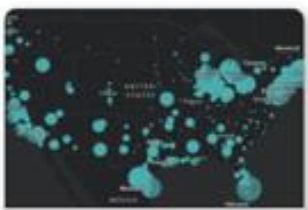
Data is critical to understanding where racial inequities exist within a community or jurisdiction. Explore a growing collection of geospatial data sourced from the global GIS community and our trusted partners. Add these datasets directly to maps and apps to visualize and analyze racial inequities in the context of your community. When using this data, please reference this article on ethics from the Urban and Regional Information Systems Association on [The Role of the GIS Professional in Issues of Equity and Social Justice](#).

View additional datasets [here](#).




USA Education Level of Women in Poverty
This layer shows the predominant level of education for women 25 or older, below...

[Explore](#)



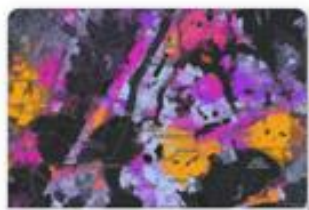
Adults Females 65 Getting Core Medical Preventativ...
This web map shows the CDC's 2017 data from their 500 Cities initiative with a focus on adult...

[Explore](#)



Which group is least likely to receive mammogram...
This map shows the overall mammogram screening percentage of female Medica...

[Explore](#)



Health, Racial & Economic Equity Data Group
Use these maps and data that can help guide decisions around health, racial, and...

[Explore](#)

The Policy Maps shown below can help you ask and answer key questions about racial inequities in your county.



Applications

Explore applications created by the GIS community and our trusted partners who are leveraging GIS to drive change around racial equity in their communities.

View additional applications [here](#).



Femicidio y violencia de género en Ecuador

Análisis de distribución espacial y causística de femicidios en Ecuador entre 2014 - 2019

[Explore](#)



Susie King Taylor

Follow the life of Susie King Taylor, the first African-American Civil War nurse and..

[Explore](#)



Commemorating women's right to vote

This collection is brought to you by the women of Black Girls M.A.P.P., WeCan, and People f...

[Explore](#)



The Life of Dolores Huerta

Civil Rights Icon, Feminist, Mother

[Explore](#)

Data





ARCGIS SOLUTIONS FOR EQUITY & SOCIAL JUSTICE



Social Equity Analysis



Deploy now →

Learn more



Social Equity Analysis

- Analyze community conditions and actions
- Understand community characteristics
- Evaluate equity at a community level
- Measure progress over time



Overview

Social Equity Analysis can be used to understand community characteristics, analyze community conditions and actions, and generate an equity analysis index.

Governments across the globe struggle to ensure residents have opportunities to continue their education, secure a well-paying job, find healthy foods, access affordable health care, and locate housing options in safe neighborhoods. They recognize many face challenges due in part to systematic and structural barriers, that constrain access to opportunity. Social equity aims to understand how systems negatively affect certain groups and

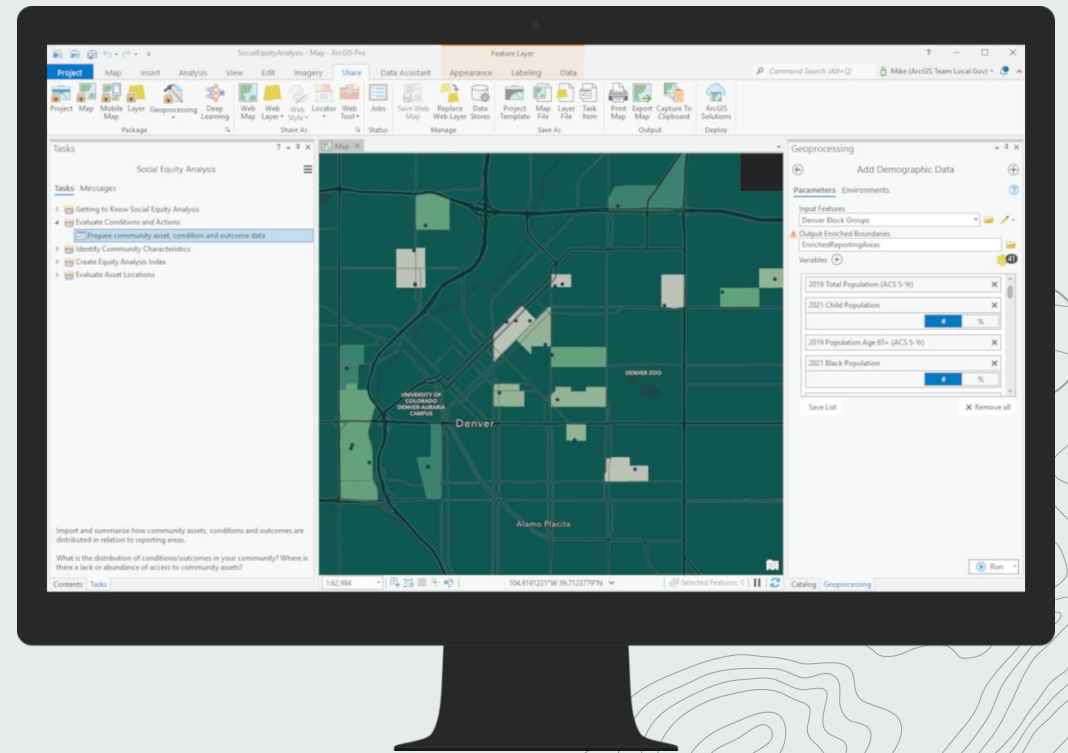
Developed for:

- Health and Human Services
- Public Safety
- State and Local Government
- Telecommunications
- Utilities

ARCGIS SOLUTIONS FOR
EQUITY & SOCIAL JUSTICE

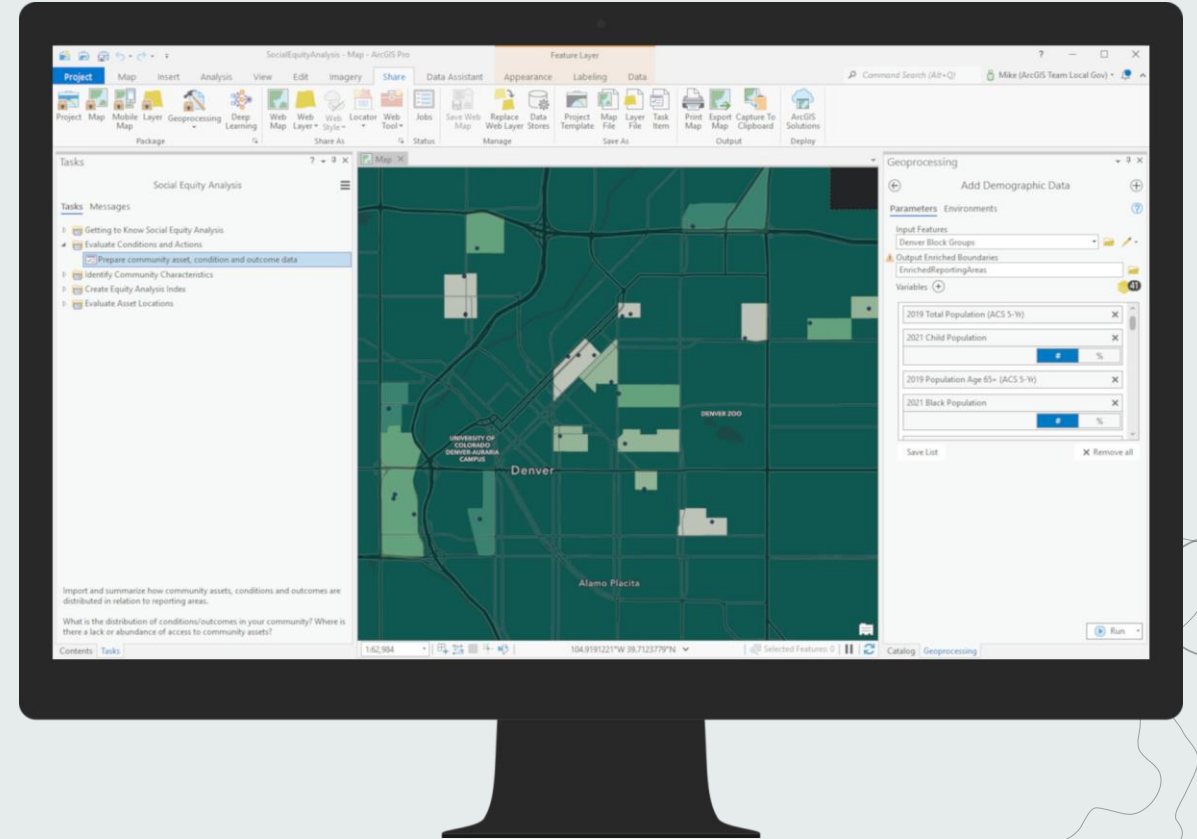


ArcGIS Solution for Social Equity Analysis

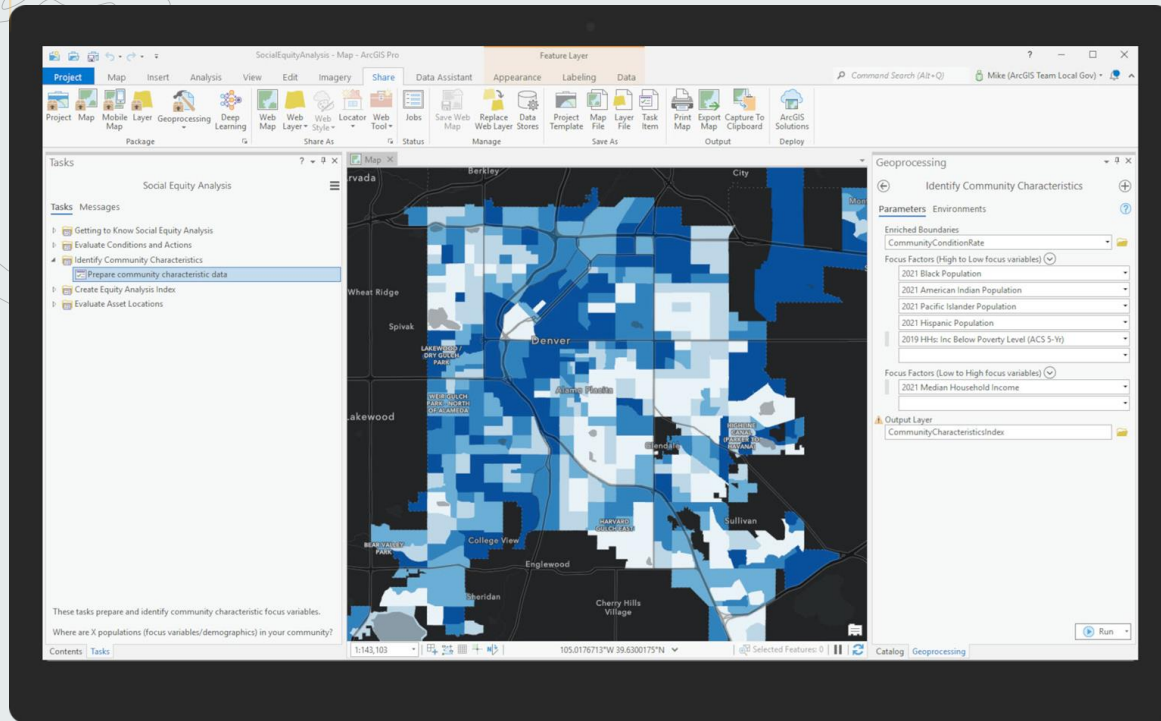


ArcGIS Solution for Social Equity Analysis

Evaluate conditions and actions



ArcGIS Solution for Social Equity Analysis

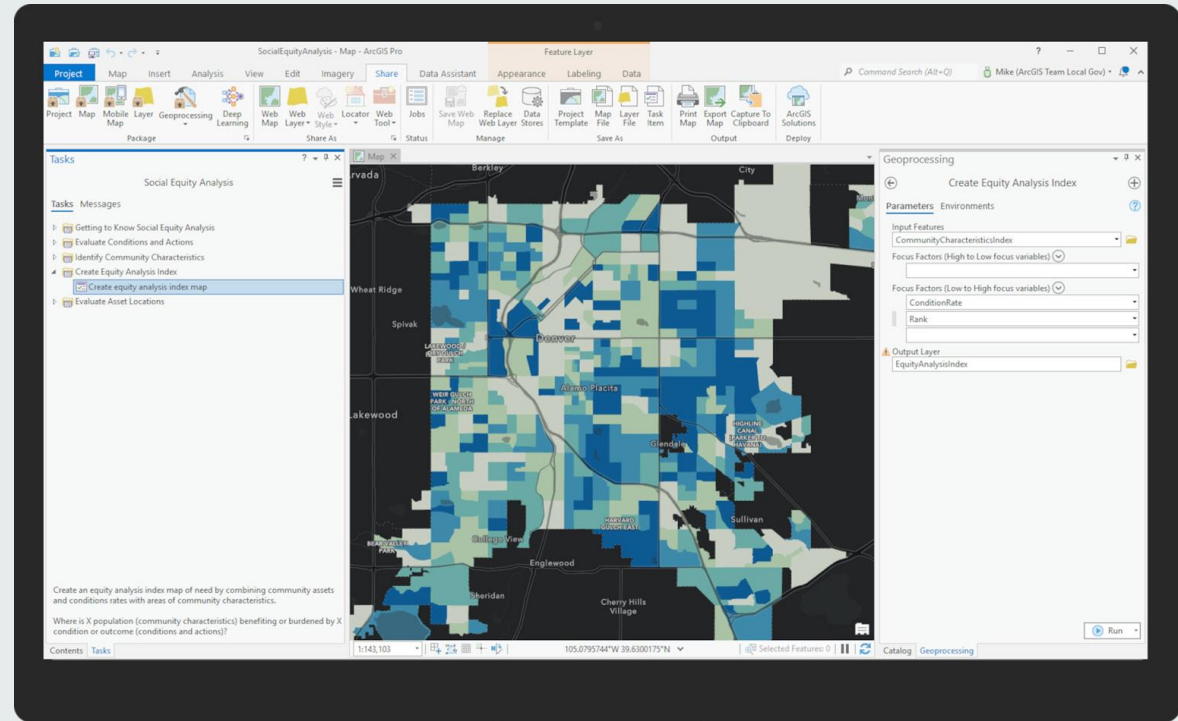


Identify community characteristics

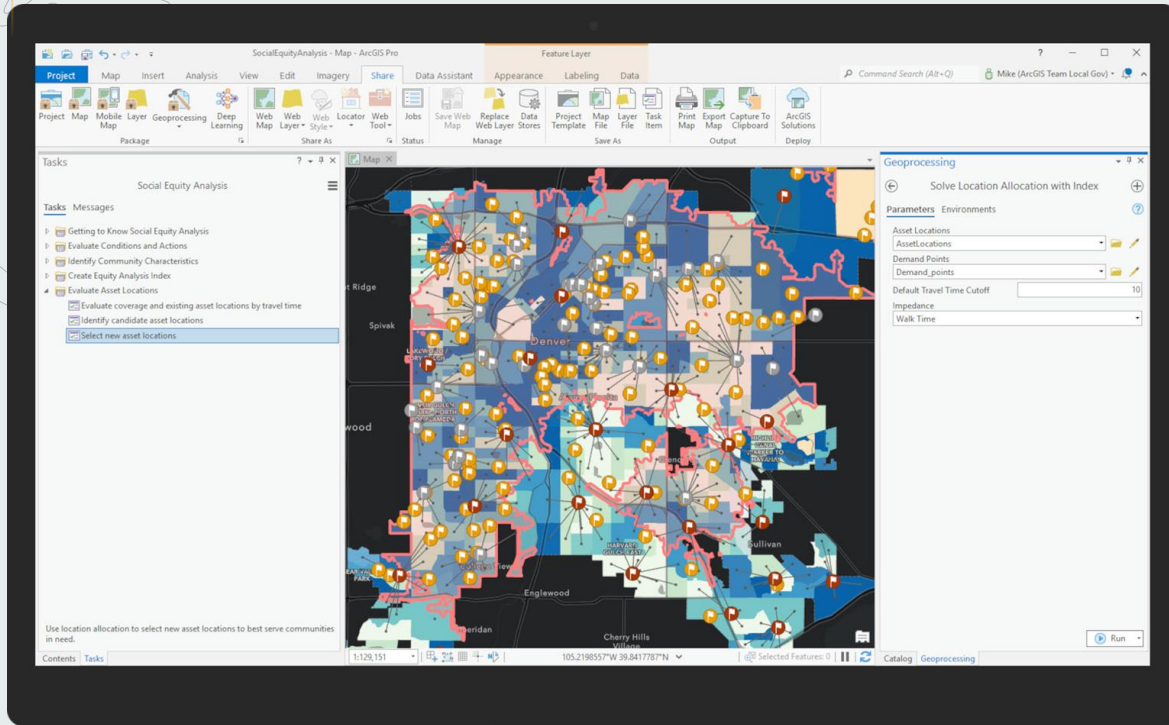


ArcGIS Solution for Social Equity Analysis

Create equity analysis index



ArcGIS Solution for Social Equity Analysis



Evaluate asset locations

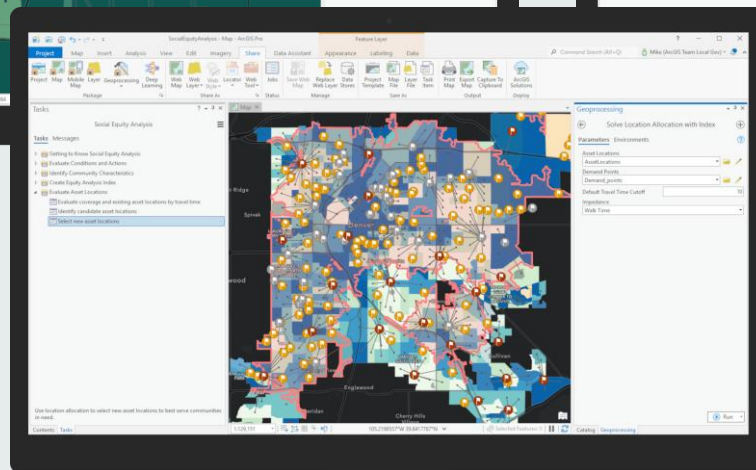
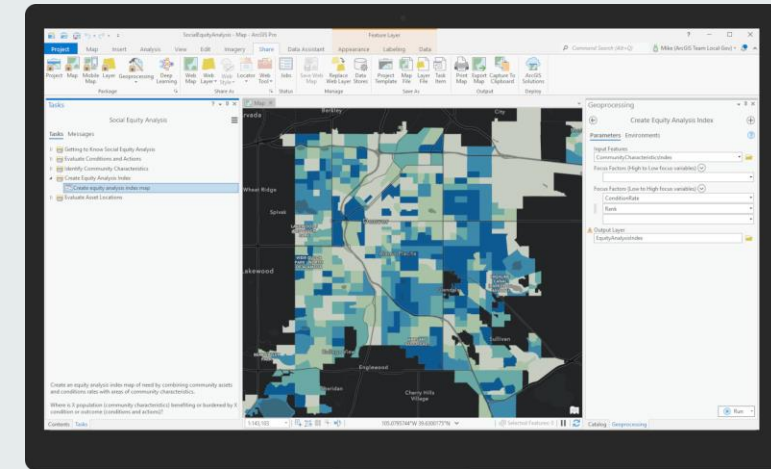
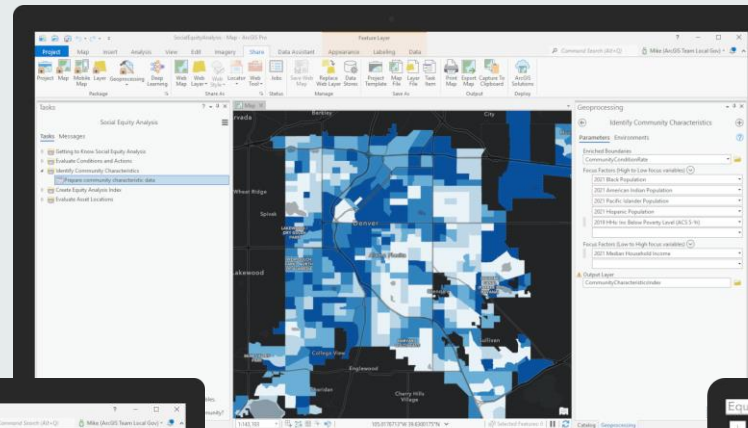
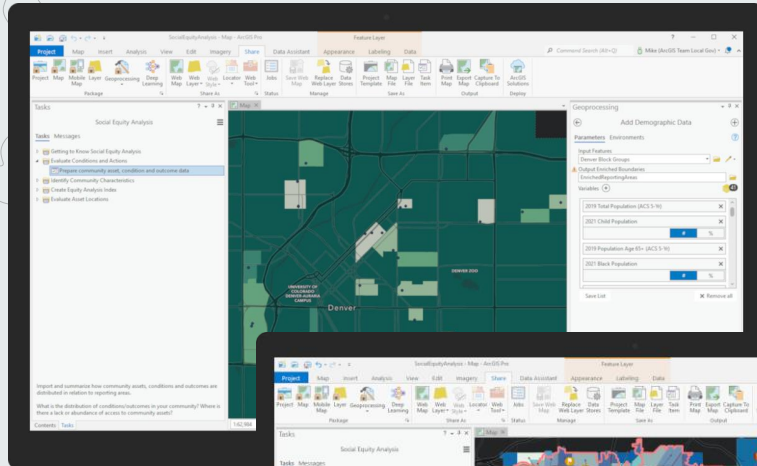


ArcGIS Solution for Social Equity Analysis

Create equity analysis index

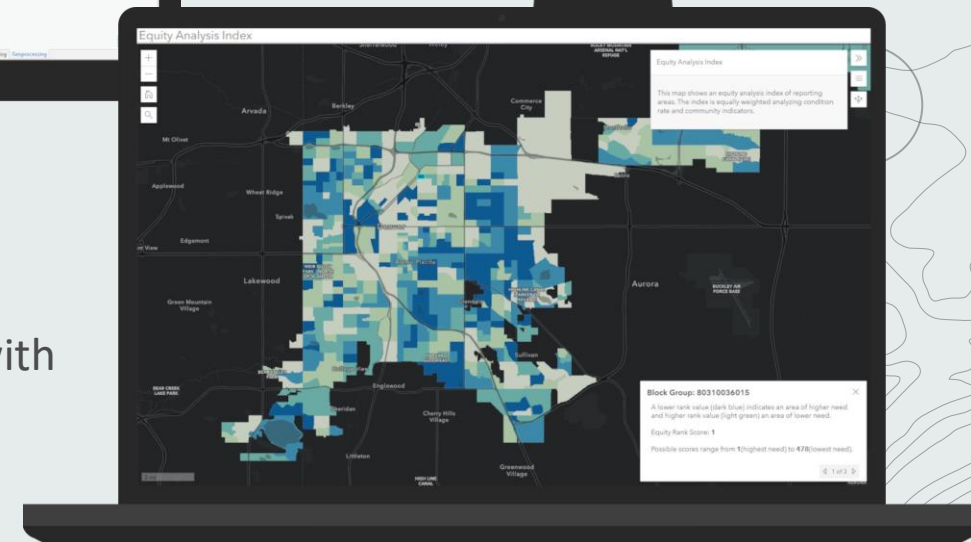
Evaluate conditions and actions

Identify community characteristics



Evaluate asset locations

Share results with
stakeholders



Racial Equity & Social Justice: A Geographic Approach

John Ruffing

